

Guidelines for In-person Learning

Warren County Technical School
February 2021

WELCOME BACK TO ACADEMICS & CAREERS!!!!

DATE TBA A Cohort
DATE TBA A Cohort

DATE TBA B Cohort
DATE TBA B Cohort

- Warren Tech is pleased to be able to bring students back for academic and career instruction.
 - Due to Covid-19, all students and staff must abide by certain rules to keep our entire school community safe.
 - Please review these guidelines and take them very seriously!
 - The more we follow the rules, the more we can be back in school.
-

GENERAL SAFETY GUIDELINES

- Students will be required to wear masks at all times, except while eating breakfast.
- Masks must be worn over the mouth and nose.
- Students should use hand sanitizer stations throughout the building to reduce germs on surfaces.
- Students are expected to wipe down their own desks with alcohol-based, sanitizing wipes provided by teachers as needed. Any medical exceptions must be cleared through Nurse Schiller.
- Students must maintain 6 feet of distance between themselves and others at all times. This rule will be monitored by staff.

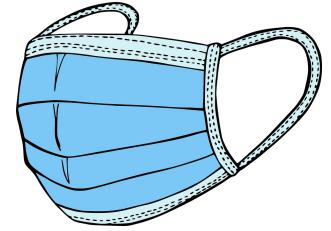


GUIDELINES FOR ENTRY



- All students must fill out Covid-19 Screening Form on Genesis prior to entry into school.
- At arrival, all students will have their temperature taken. Students with a temperature higher than 100.3 will be denied entry/sent home
- Bus arrivals/dismissals will be staggered to limit students in hallways and at food distribution locations.
- Students may pick up “to go” breakfast outside the Knights Cafe.
- **DO NOT SEND STUDENTS TO SCHOOL WITH ANY COVID-19 SYMPTOMS. STUDENTS WITH POSSIBLE COVID-19 SYMPTOMS WILL BE SENT HOME IMMEDIATELY.**

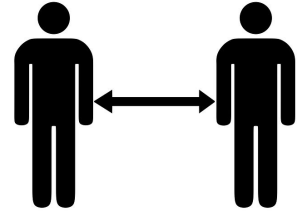
GUIDELINES FOR FOOD/WATER



- Students use hand sanitizer before eating breakfast.
- Students must remain at their seats while eating. Teachers will set a time limit for eating breakfast. **NO SNACKS WILL BE ALLOWED IN CLASSROOMS.**
- Mask is removed only to eat and put back on as soon as finished eating.
- Hand sanitizer must be used again after eating.
- Students must wipe down the desk area after eating with sanitizing wipe.
- Classroom windows are open for ventilation during this time.
- Students are encouraged to bring filled water bottles with them as water stations are closed.

GUIDELINES FOR HALLWAYS

- Lockers will not be used. Bring a bag for your belongings that you can carry with you. There are NO EXCEPTIONS.
- Masks MUST be on at all times.
- Give each other as much space as you can while moving between classes. Do not congregate in groups.
- Walk quickly to your next class.
- NO LOITERING will be allowed.
- Teachers, administrators, and security will monitor hallways to make sure rules are followed.



GUIDELINES FOR BATHROOMS

- Students should limit bathroom use to necessity only.
- Bathrooms will be cleaned throughout the day.
- Bathroom doors will be open for ventilation in all bathrooms where privacy can be maintained.
- Security will monitor bathrooms continuously to make sure no congregating occurs.
- Wash hands and use hand sanitizer before and after entering bathrooms.
- Masks must remain on in bathrooms.
- **Disciplinary action will occur for any misuse of student bathrooms.**



GUIDELINES FOR CHROMEBOOKS/BACKPACKS

- **Students MUST bring their school-issued chromebook every day.**
- If a student does not yet have a chromebook, one will be assigned the first day the student arrives for in-person instruction.
- Chromebooks must be fully charged and ready for use every school day. There will not be access to charging at school during the day.
- Students must be able to secure all belongings in their backpacks, including their chromebook.



GUIDELINES FOR PHYS. ED



- Students must wear sneakers or bring sneakers on gym days.
- Students will not use lockers or change for physical education. Students must wear appropriate attire on gym days.
- Masks will be worn during all activities.
- Students will go outside as much as possible for physical education classes. Students must bring appropriate clothing to go outdoors. Classes will go routinely go outdoors in temperatures above 32 degrees.
- Activities will be planned that reduce interaction and do not involve contact.

GUIDELINES FOR DISMISSAL

- Dismissals will be staggered to limit students in hallways and at food distribution locations.
- Students will be dismissed by grade-level classes in reverse order (Seniors-Freshmen)
- Students may pick up “to go” lunch outside the Knights Cafe.
- Lunches should not be eaten on busses.
- Masks must be worn on busses and all rules of the bus company regarding safety must be followed.

